

**FOR IMMEDIATE RELEASE**  
11/16/2017

**MEDIA CONTACT**  
Elise Brooking  
Marketing & PR Associate  
Kirksey  
713 426 7555  
[eliseb@kirksey.com](mailto:eliseb@kirksey.com)



6909 Portwest Drive  
Houston Texas 77024  
713 850 9600  
[kirksey.com](http://kirksey.com)

## **Homeless Mission Unveils New 48-acre Community<sup>SM</sup>**

*Star of Hope's New Cornerstone Community<sup>SM</sup> Campus*

*Designed by Kirksey Architecture*

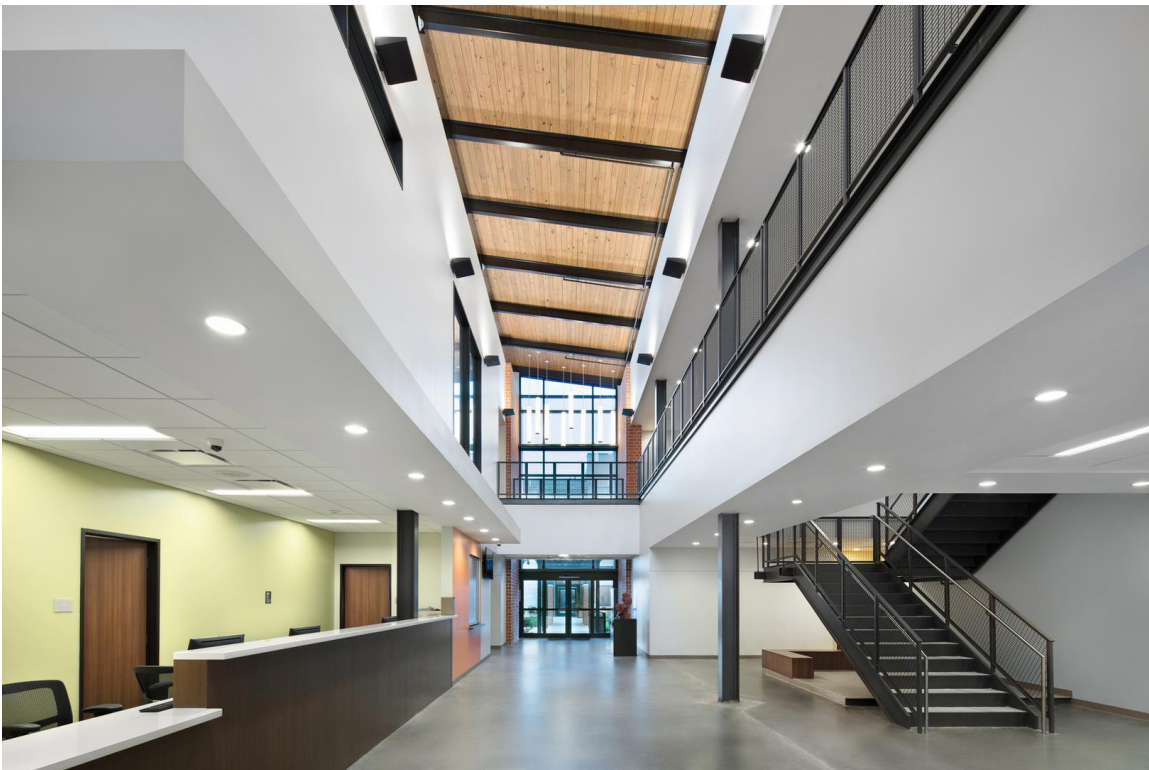
**HOUSTON, TEXAS** – Star of Hope President and CEO Hank Rush has announced the opening of a cutting-edge, master planned facility designed to address the specific needs of Houston's homeless women and children on Thursday, November 9. The celebration was well-attended by community partners and City of Houston Mayor Sylvester Turner. Designed by Kirksey Architecture, the 48-acre campus provides counseling, shelter, recovery and educational programs and a bright future for over 600 clients.

"Cornerstone Community<sup>SM</sup> is the culmination of a 5-year vision for a new, expanded Star of Hope," said Rush. The community is located at 2575 Reed Road, two miles south of NRG stadium, off of Hwy 288.

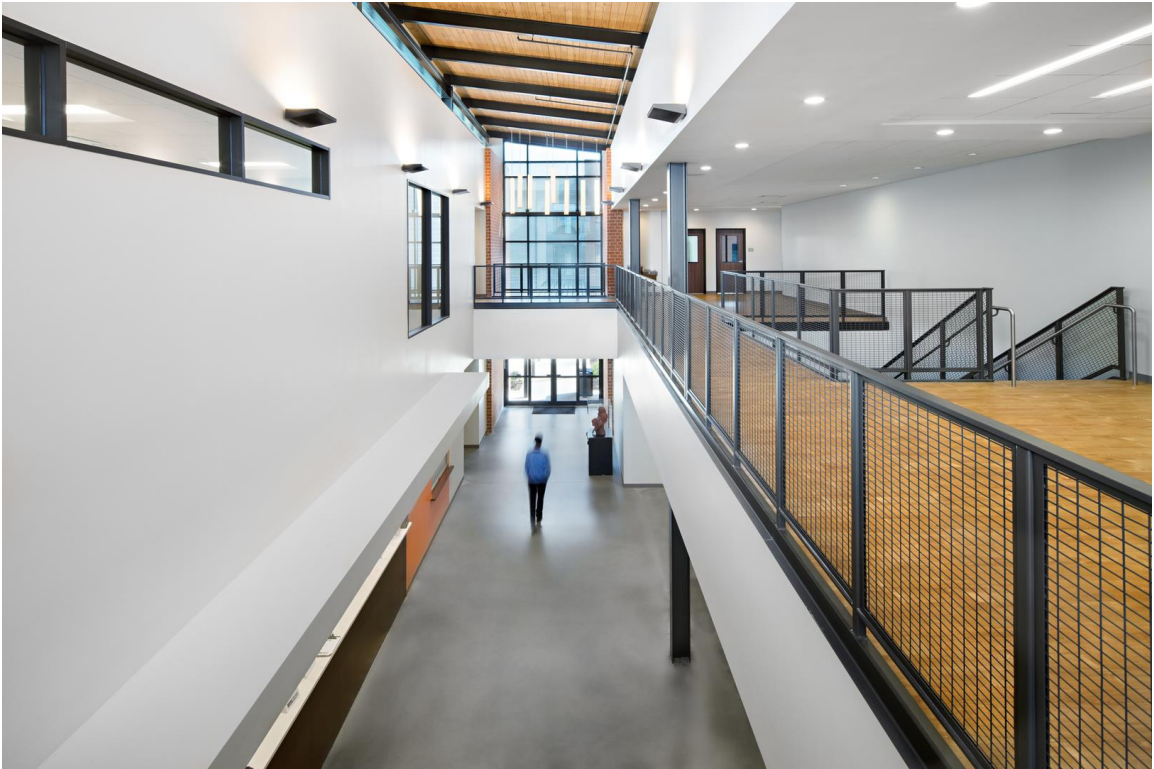
"Here we will serve up to 600 women and children, with a full spectrum of basic services, counseling, programs for substance abuse recovery, GED and educational opportunities, job skills training, and independent living readiness. Star of Hope's former Women and Family Emergency Shelter downtown, and our Transitional Living Center near the Texas Medical Center have been consolidated on this campus, to become the new Women & Family Development Center, designed to provide services to up to 180 single women and 150 families," he said.

The Women & Family Development Center will continue to provide short term emergency care as well as longer term recovery and education programs. Increasing the combined capacity of the former facilities by 20%, this paradigm-changing, long-term campus solution immediately matches residents with a case manager upon entrance and allows them to select their pathway to recovery in this brand-new environment, with on-site access to transportation and located within minutes of the Fannin Street Light Rail. After completion of Star of Hope's recovery and educational programs at the Women & Family Development Center, community partners also located on this transformational campus, provide additional assistance with a continuum of services including family counselling and activities, job placement, affordable housing and a

community center. Cornerstone Community<sup>SM</sup> is the result of a 5 year, \$50 Million Capital Campaign.



- Continued below -



- Continued below -





Kirksey is a Houston-based, sustainable architecture and interior design firm with more than 33 million sf of LEED® projects in their portfolio. Team-based in structure, Kirksey serves Commercial, Collegiate, Community, pK-12, Government, Healthcare, Hospitality, Religious, Science & Technology, and Multi-Family Residential markets.

####