



MASS TIMBER

at Rice University

B — L

Kirksey
ARCHITECTURE

FORNEY

A close-up photograph of a mass timber joint. The image shows the end grain of several wooden planks, which are arranged in a staggered, interlocking pattern. The wood has a warm, light brown tone and prominent, wavy grain patterns. The joint is secured with visible screws or bolts, which are partially obscured by the wood's texture. The lighting is soft, highlighting the natural grain and the precision of the assembly.

WHAT IS MASS TIMBER?

Mass timber is a solid wood framing system that is made from small pieces of dimensional lumber that are secured with either glue, dowels, or nails.

Mass timber elements may be used for structural floor, roof, column, beam, or wall applications within a building.

BENEFITS OF MASS TIMBER

- + Reduced construction time
- + Quiet construction site
- + Reduced foundation
- + Carbon storage
- + Biophilia



WHY MASS TIMBER AT RICE UNIVERSITY?

“This parallels our architectural research,
so that’s one of the rationales for us
wanting to build with timber.”

*Mark Ditman, Associate Vice President Housing
and Dining, Rice University*



HANSZEN COLLEGE

The Hanszen College Wing is a replacement of the existing 1957 building. The existing facility was an “L” shaped building and the new facility has a reduced, more efficient footprint, allowing space for future growth.

The new facility will be approximately 57,500 square feet and five stories tall.



Fifth Floor Plan



Second - Fourth Floor Plans



First Floor Plan



Basement Floor Plan

- SINGLE ROOM
- DOUBLE ROOM
- BATHROOM POD
- RA SUITE



DESIGN INTENT:

PROVIDE AS MUCH EXPOSED
MASS TIMBER AS POSSIBLE.

SOLUTION:

- + Free and clear corridors
- + Free and clear bedroom spaces
- + Concealed spaces only at
the bathrooms and entry to the dorm.



RESIDENTIAL ROOMS

The College includes 166 beds with single and double bed configurations.

In addition, the facility will include two residential advisor suites, a lobby and outdoor terraces overlooking the Hanszen quad.



Residential Advisor Suite

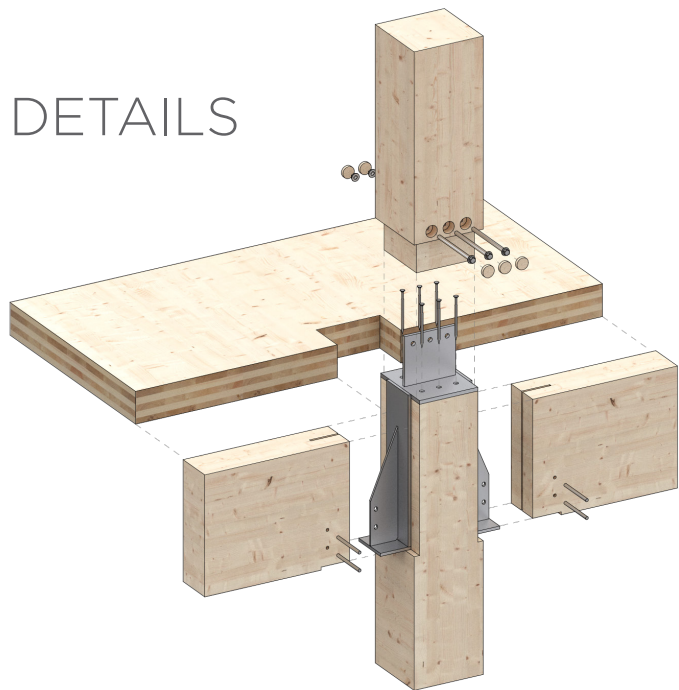


Single bed



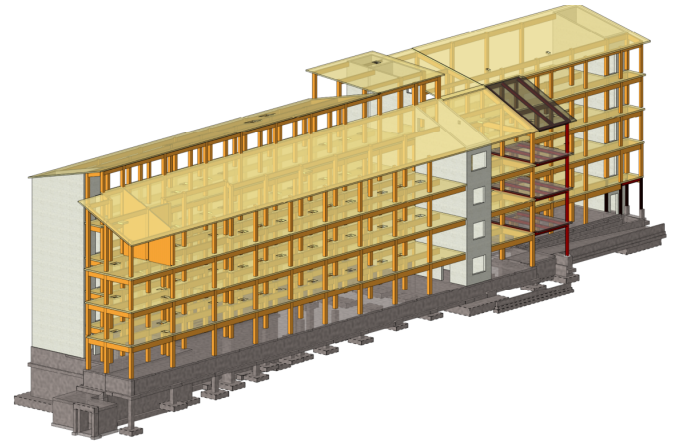
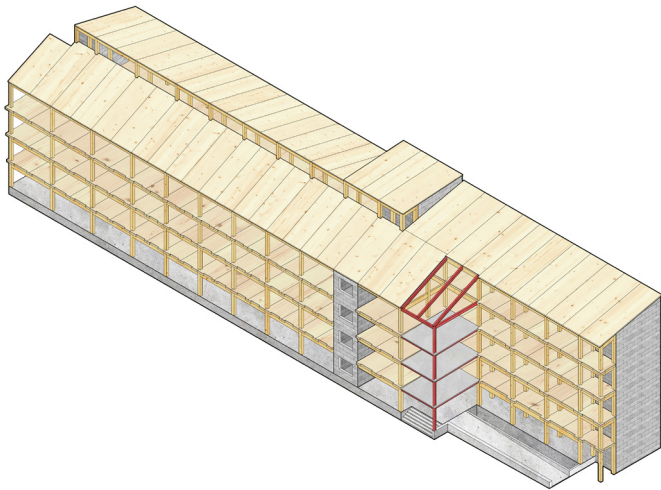
Double bed

DETAILS





Hanszen College is the first mass timber collegiate residential facility in Texas.



The project is constructed using SYP (Southern Yellow Pine) species.



Scan with your smartphone camera
to see a short construction video.

For more information, contact

Steve Durham, AIA, LEED AP

Kirksey, Director of Collegiate Projects

713 426 7521 / steved@kirksey.com

B — L

Kirksey
ARCHITECTURE

FORNEY