

Private Schools



Kirksey
ARCHITECTURE

Offices in **Houston + Austin + Dallas**

- ARCHITECTURE
- INTERIOR DESIGN
- MASTER PLANNING
- SUSTAINABILITY
- BUILDING PHYSICS
- BRANDING
- CAPITAL CAMPAIGN SUPPORT

- Commercial
- Community
- Collegiate
- pK-12
- Government
- Healthcare
- Hospitality
- Multifamily Residential
- Science & Technology



Your school is a place where learning thrives.

Students are learning in ways that have changed dramatically over the last two decades, and history has proven that teaching methods and learning styles will only continue to evolve. As designers and architects, our job is to equip you with an environment that is flexible enough to manage those changes and innovative enough to encourage new discoveries and opportunities. Your school is a partner in that discovery, and we believe in creating spaces that inspire.



Our Education Design Philosophy

Kirksey's in-depth, progressive approach to school design results in learning environments that can truly be long-term teaching tools. We make it our mission to understand and appreciate how children learn and what type of environment creates the best outcome for success.

As part of our approach, Kirksey developed PlayTheory, which brings fun to the design process and involves engaging all users — whether they are students, parents, educators, or administrators. Through the use of descriptive words and image flashcards, participants can contribute to an outcome that taps into some of the more intrinsic and philosophical aspects of the project. Engaging in this type of participatory design results in a solution inspired by the group's ideas and reflects the community's unique story.

Our Design Dive process involves asking important questions in a different way and engaging everyone in the process.



21st-Century Learning is



Adaptive + Flexible



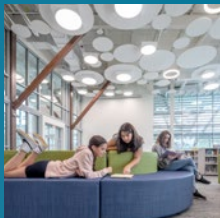
Blended + Varied



Collaborative + Integrated



Dynamic + Moving



Ergonomic + Human Centered



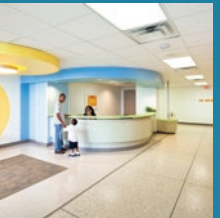
Indoor + Outdoor



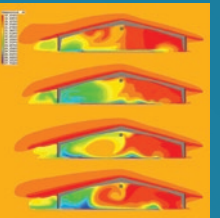
Inspired + Thoughtful



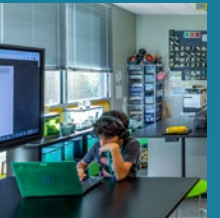
Playful + Fun



Safe + Secure



Sustainable + Smart



Technologically Savvy

Today's students absorb and retain knowledge differently than they did even a decade ago.

The abundance of technology at their fingertips can't be overlooked, but it shouldn't be the sole focal point of their learning environments. We know that teachers and school administrators are looking to architects to design and build smart structures with an enduring life-cycle — to create a 21st-century learning environment that adapts and evolves with the students.

Master Planning

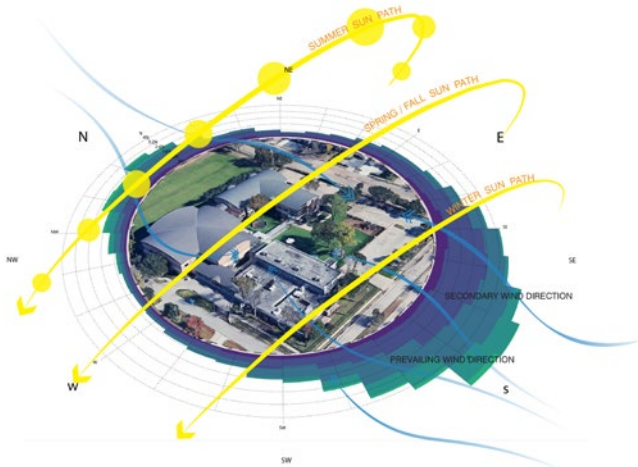
A private school campus must be thoughtfully planned from the beginning and then implemented over time, with room to grow. Our master planning process begins with a deep dive into your school's mission and your vision for the future. Exploration and discovery are hallmarks of our master planning exercises and ultimately lead to a clear, flexible roadmap for continual growth. With a clear understanding of your vision and goals, we create cohesive design solutions that celebrate your school's history while looking forward and making room for the future. Kirksey-designed learning

environments evolve as you grow and elevate teaching, learning, and play - both inside and outside the building.

Our team understands how to develop a central theme that celebrates your community and creates a safe place where students can thrive. Through careful consideration and early engagement, we can plan campus environments that mirror how your community moves, gathers, reflects, is active, and ultimately, how it can best be safe and secure.



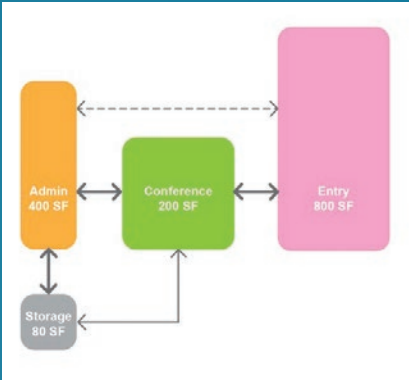
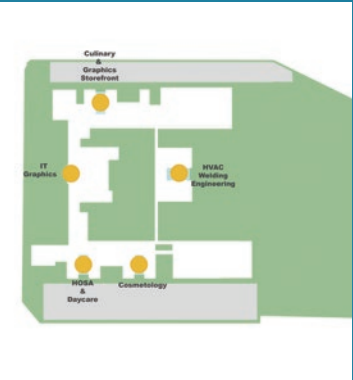
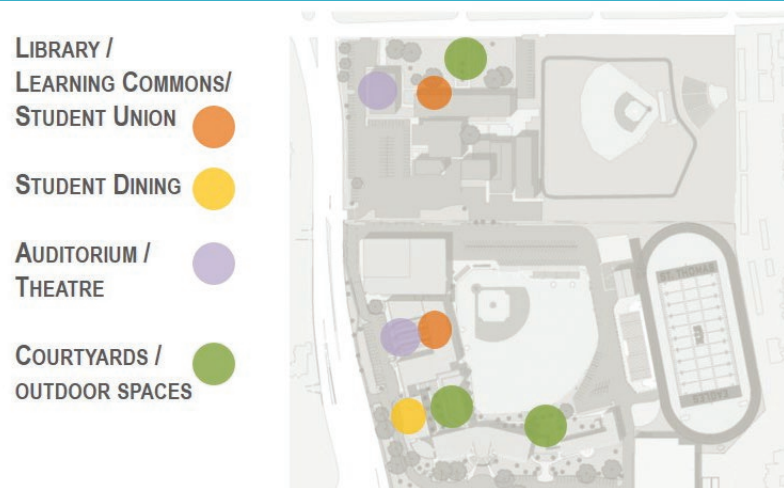
A good campus plan creates clear paths of movement, separating pedestrian and vehicular traffic.



Programming

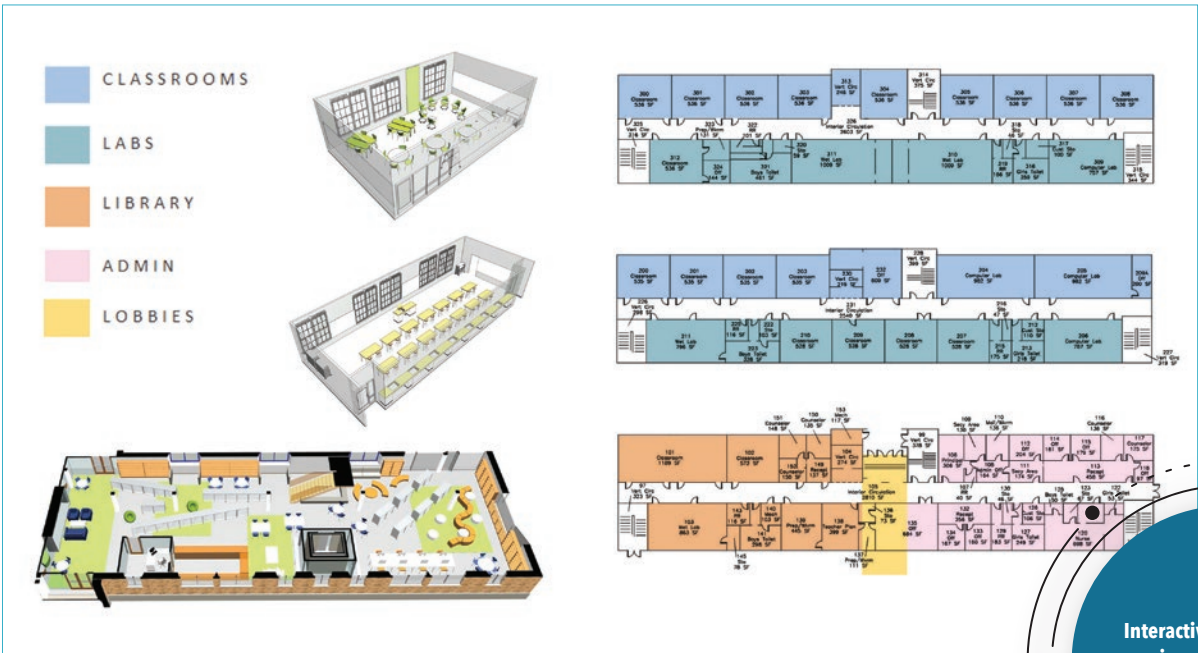
Programming focuses on the quantitative aspects of a design, making sure to address the specific needs of the users and the specific requirements of the defined spaces.

A great program addresses the number and size of the spaces but also recognizes the flow of use throughout the entire day. A complete program incorporates outdoor spaces and uses them to supplement indoor spaces, maximizing the possibilities of your building and campus.



Adjacency diagrams like these express the relationships between spaces and support functions.

Exploration and discovery are hallmarks of our master planning and programming process.



Interactive programming sessions help to put a real-world spin on how people truly use their spaces.

Who? faculty and classes 10 minutes

When? 1 minutes A day in the life...

How? 15 minutes pedagogy pods guide the method and practice of teaching, especially as an academic subject or theoretical concept.

Where? 15 minutes spaces

What? STAINLESS SINKS FUME HOODS SAFETY SHO EYE WASH FLOOR DRAINS POWER WIFI ELEC WHITE BOARD COMPUTER PRINTER DISHWASHER ICE MACHINE REFRIGERATOR FUME HOODS SHELVING

TEACHERS	STUDENTS	CLASS	FUTURE TEACHERS	FUTURE STUDENTS
		BIOLOGY	1-20 RATIO	20
		CHEMISTRY		
		PHYSICS-ROBOT-ROCKET		
		GEO-OCEANOGRAPHY		
		ANATOMY-PHYSIO		
		ENVIRONMENTAL		
		HEALTH		
		MATH		
		TECHNOLOGY		

Science Math Technology



TEXAS SOCIETY OF ARCHITECTS
DESIGN AWARD
WINNER

AIA Houston
DESIGN AWARD
WINNER

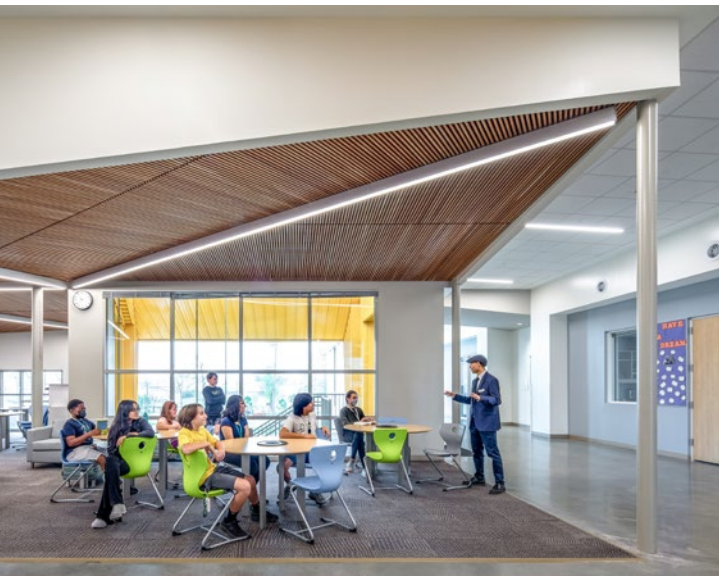
THE BRANCH SCHOOL

MASTER PLAN / PROGRAMMING / CLASSROOMS / MAKER SPACES / OUTDOOR LEARNING



The Branch School is an independent private school in West Houston for preschool, elementary, and middle school students. Their 21st-century learning approach and curriculum focuses on developing skills that “enable future leaders to communicate effectively, listen to other points of view, collaborate, and empathetically respect the dignity of all.” Kirksey and The Branch School worked together to establish a new master plan to accommodate strategic growth and complete the priority project, Hightower Middle School - a 29,000-sf, highly sustainable middle school building with project-based learning and collaboration opportunities that maximized the site for outdoor learning spaces. Integrated water, energy, and wind design strategies become teaching moments for students.





THE BRANCH SCHOOL, CONT'D

MASTER PLAN / PROGRAMMING / CLASSROOMS / MAKER SPACES / OUTDOOR LEARNING



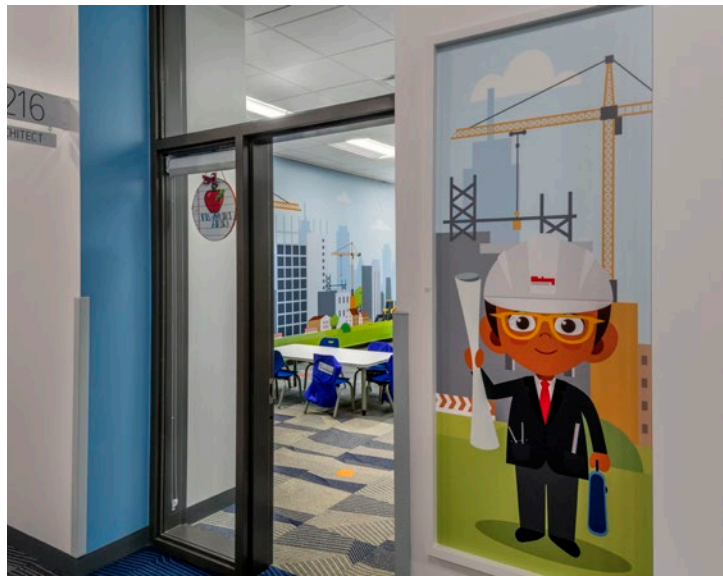
SECOND BAPTIST SCHOOL

MASTER PLAN / PROGRAMMING / RENOVATIONS / PRE-K - 5TH GRADE CLASSROOMS / WORSHIP



Kirksey has a 15+ year history of successful projects with Second Baptist Church and School, from designing two new church campuses to the ongoing phased renovation and expansion projects on their Houston/Woodway campus. Most recently, Kirksey designed the new four-story, 115,000-sf Children's Education building, which sits strategically on a 1.5-acre parcel on the existing Woodway Campus. The building houses classroom spaces for children from birth to 5th grade, four children's worship spaces, administrative suites for church and school, and associated support spaces. A sky bridge connects the existing worship center to the third level of the new building to promote connectivity.





SECOND BAPTIST SCHOOL, CONT'D

MASTER PLAN / PROGRAMMING / RENOVATIONS / PRE-K - 5TH GRADE CLASSROOMS / WORSHIP



THE PARISH SCHOOL

MASTER PLAN / CLASSROOM CABINS / OCCUPATIONAL THERAPY / OUTDOOR LEARNING & PLAY



Envisioned in a summer camp setting, The Parish School provides education for students with communication and learning differences ranging in age from 18 months to third grade. The 17-acre master plan includes seven classroom cottages, each with four classrooms, common spaces such as a multi-purpose building for art, athletics, and dining, a media center and administration building, and a diagnostic treatment center.





THE SHLENKER SCHOOL

RENOVATION MASTER PLAN, PROGRAMMING, PRE-K ELEMENTARY CLASSROOMS /
MULTIPURPOSE SPACES / LIBRARY / SPECIALTY SPACES



The Shlenker School serves early childhood through 5th grade. Kirksey designed renovations to 60,000 sf of its single-story building to expand programs and create a more cohesive campus. The renovation includes updated classrooms, common areas, corridors, a cafeteria, and improved technology, all designed to support project-based learning. Exterior upgrades enhance the entry area, update the school canopy, introduce new landscaping and furniture, and install new security features, improving the school's indoor and outdoor spaces.



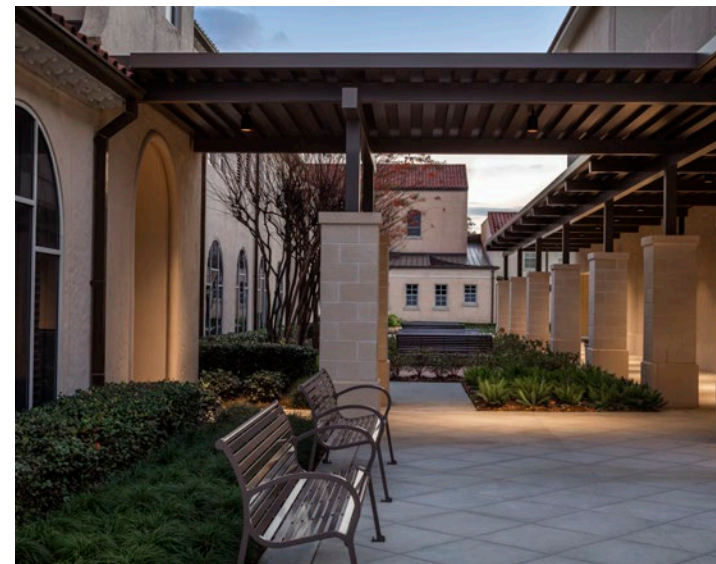


ST. ANNE CATHOLIC COMMUNITY

DANCE / GYM / LOCKER ROOMS / COMMONS / OUTDOOR SPACES / PARKING GARAGE



The new Garage and Commons Building serves both the Saint Anne Catholic Community church and school, consisting of a three-story parking garage and a single-story, free-standing facility that replaced the existing gymnasium and surface parking on campus. Beginning with a landscaped promenade at the main entry drive off Kingston, the project aims to enhance pedestrian and vehicular circulation while adding parking and accommodating a range of indoor and outdoor functions in the north and west areas of the SACC campus. The new buildings and canopies aesthetically blend with the existing buildings' Spanish Mission style, highlighted by stucco walls and red terracotta tile roofs.





GOOD SHEPHERD EPISCOPAL SCHOOL

CLASSROOMS / GYM / OFFICES / LOCKER ROOMS / PRE-K / WORSHIP / RENOVATIONS



A long and successful history with Good Shepherd Episcopal School in Dallas has resulted in several significant projects, including the Kelseo Cottage Pre-School renovation to support full-day programming, the Mackey Chapel & Nichols Hall renovation, which increased the flexibility of the space to serve both the church and the preK-8 school, and a new courtyard for outdoor learning. Most recently, Kirksey designed a new 15,240-square-foot gymnasium that features a light-filled lobby area with space for learning, a full-size multi-purpose gym equipped with a rock wall and bleacher seating, as well as classroom space, coaches' offices with two-story storage areas, and locker rooms. The building also functions as a storm shelter during weather emergencies.





YELLOWSTONE SCHOOLS

MASTER PLAN / PROGRAMMING / RENOVATIONS / CLASSROOMS / FINE ARTS / ATHLETICS / LABS / LIBRARY



Kirksey worked with Yellowstone to create a complete Master Plan that reorganized the 7.5-acre campus to serve preK-12th grade. The planning and programming effort resulted in multiple options and phasing strategies to support additional growth on the campus for the next decade.

To accommodate middle and high school students and other campus needs, the addition includes 15 new classrooms, two new science labs, a computer lab, and four flex labs supporting Art, Dance, Music, and a Makerspace/Workshop.



Common spaces include a two-story library, with an elementary component on the ground floor and an upper school component on the second floor. The Main Commons doubles as the cafeteria and assembly space, while also serving as a bridge between the historic portion of the campus and the expansion. It supports a capacity of 900 people with auditorium seating and 430 middle and high school students for dining. Administrative space for staff and faculty is housed on the first and second floors and includes 15 offices, Teacher Professional centers, conferencing space, and storage.



YELLOWSTONE SCHOOLS, CONT'D

MASTER PLAN / PROGRAMMING / RENOVATIONS / CLASSROOMS / FINE ARTS / ATHLETICS





 "The Nest"

 is a hands-on

 maker space.

THE KINKAID SCHOOL

MASTER PLAN / PROGRAMMING / RENOVATIONS / CLASSROOMS / DINING HALL



The Kinkaid Learning Center, which includes the middle school and dining hall, meets the needs of a rapidly growing private school. A focal point at the end of a beautiful courtyard, the 26,000-sf two-story building is physically connected to two existing buildings by bridges.



The dining hall doubles as event space.

THE KINKAID SCHOOL, CONT'D

MASTER PLAN / PROGRAMMING / RENOVATIONS / CLASSROOMS / DINING HALL



Market-style servery



Bistro seating options



Market-style servery



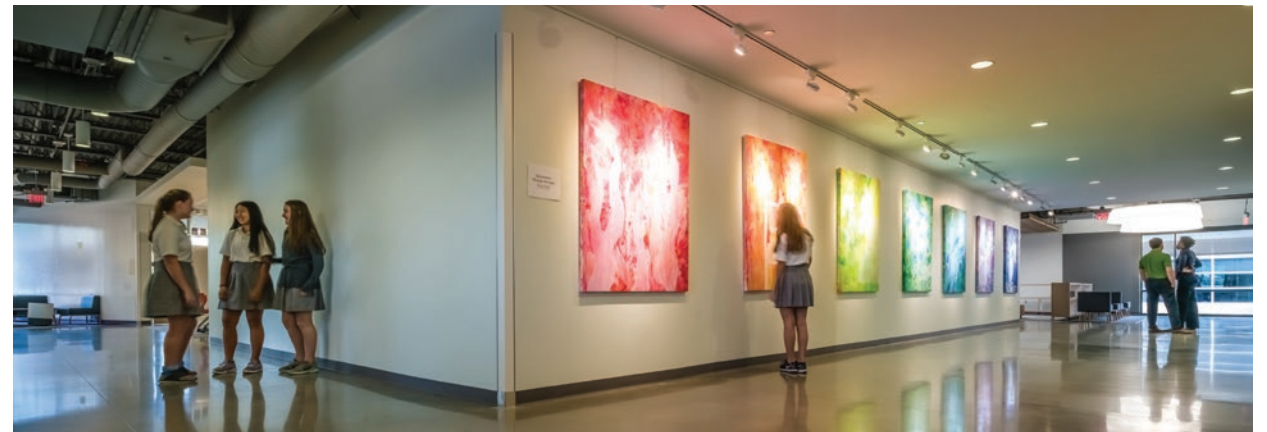
Bistro seating options

Organized by floor, the first story houses the kitchen, servery, and dining hall, which can seat up to 500 people. The dining hall design incorporates a variety of seating possibilities, featuring bistro-style booths, bench seating, and moveable seating options to accommodate special events such as fundraising galas and staff meetings. The hall is equipped with technology and electrical outlets to accommodate various group meetings, studying, and extended classroom activities throughout the day.

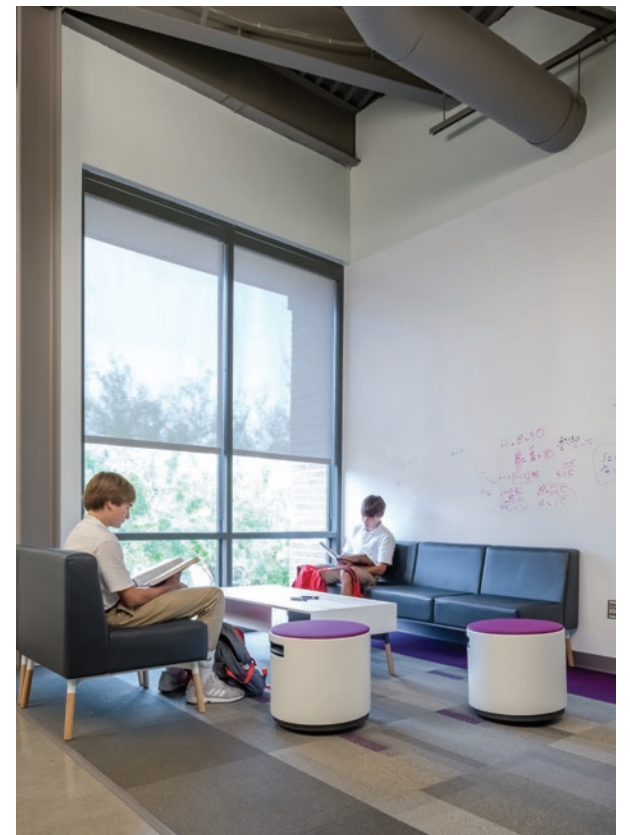


THE KINKAID SCHOOL, CONT'D

MASTER PLAN / PROGRAMMING / RENOVATIONS / CLASSROOMS / DINING HALL



The second floor includes middle school classrooms, with innovative design solutions such as “The Nest,” a workshop maker space where students can use a 3D printer, craft a new garment at the sewing station, or even custom design and laser print the school’s signage. At Kinkaid, it’s not only okay to write on the dry-erase walls — it’s encouraged. Classrooms feature flexible furniture and sliding walls, allowing teachers to rearrange walls and create one large classroom — enabling innovative “co-teaching” styles.



ST. THOMAS HIGH SCHOOL

MASTER PLAN / PROGRAMMING / PARKING GARAGE



St. Thomas High School is a Catholic college preparatory school for young men in Houston. After acquiring additional land adjacent to their campus, they worked with Kirksey to conduct facilities assessments and master plan the two campuses to unite them into a state-of-the-art secondary education campus.





To accommodate visitors during community and sporting events, Kirksey designed and completed a four-level garage to provide additional parking. The design team carefully developed the structure's visually pleasing facade to maintain St. Thomas' thoughtful and intentional campus aesthetic.

ST. THOMAS HIGH SCHOOL, CONT'D

MASTER PLAN / PROGRAMMING / PARKING GARAGE





THE EMERY/WEINER SCHOOL

MASTER PLAN / PROGRAMMING / RENOVATIONS / CLASSROOMS / FINE ARTS / ATHLETICS



The Emery/Weiner School is a private day school providing a secular and Judaic education for approximately 700 6th - 12th grade students. Kirksey was commissioned to program, master plan, design, and document their new campus on a 12-acre tract of land. Phase I included three buildings totaling 90,000 sf with a 500-seat auditorium, two-court gymnasium, dining facilities, a library, middle and upper school classrooms, and all appropriate support spaces. Phase II included an upper school addition and a 10,000-sf fine arts addition with a 120-seat black box theater.



THE EMERY/WEINER SCHOOL - SPORTS & ENGINEERING COMPLEX

SCIENCE LABS / MAKER SPACES / WELCOME AREAS



Additional upgrades on the campus include the Sports and Engineering Complex. The new three-story building provides state-of-the-art educational facilities for all of the sciences, as well as maker spaces, a library, and a welcome center. The addition also includes a practice gym, an indoor practice facility for outdoor sports, and updated locker rooms and concessions spaces.



BETH YESHURUN DAY SCHOOL

RENOVATIONS / DINING / CLASSROOMS / ADMINISTRATION / TECHNOLOGY CENTERS



Beth Yeshurun Day School is the oldest and one of Texas's largest Jewish day schools. To support their mission "to foster confidence, leadership, a love of learning, and a sense of responsibility in students," the school underwent a significant renovation, fully modernizing the entire educational facility to improve the learning environment dramatically. The changes made to the building significantly improved access to daylight, centralized common spaces like the library, and upgraded research centers to accommodate changing technology.





Strake Jesuit is a four-year Catholic college preparatory school for young men in 9th through 12th grade. The school commissioned Kirksey to master plan and design two new facilities, a 30,000-sf Student Center and a 22,500-sf Classroom & Technology Building, to accommodate decades of growth in the student body. The Student Center includes a 1,000-seat auditorium, a 4,000-sf lobby, and a music department with classrooms and ample rehearsal space. The Classroom & Technology Building features integrated digital projection in every classroom and a fully computerized foreign language lab.

STRAKE JESUIT

MASTER PLAN / PROGRAMMING / STUDENT CENTER / FINE ARTS / ATHLETICS / CLASSROOMS



STRAKE JESUIT, CONT'D

MASTER PLAN / PROGRAMMING / STUDENT CENTER / FINE ARTS / ATHLETICS / CLASSROOMS



Additionally, to accommodate a growing and improved athletics program, Kirksey designed the tennis and aquatics facility, football stadium, fieldhouse, basketball arena, and maintenance building.



DOWNTOWN HOUSTON CHILDCARE CENTER

PROGRAMMING / CLASSROOMS / INFANT / TODDLER / PRE-K / KINDERGARTEN



The Downtown Houston Childcare Center is an oasis in the heart of the city that provides a comfortable, warm atmosphere for students of various ages. This facility helps collapse the barriers between work, home, and school and softens the rigidity of a bustling urban business district.





*We design schools that facilitate learning,
rather than dictating it.*



private schools

public schools

administration

athletics

aquatic facilities

visual & performing arts

STEM

Kirksey
ARCHITECTURE

Kirksey.com

TX REGISTERED ARCHITECT #5236 / © KIRKSEY



Kirksey
ARCHITECTURE

Houston + Austin + Dallas

HOUSTON

6909 Portwest Drive
Houston, Texas 77024
713 850 9600

DALLAS

143 Manufacturing Street
Dallas, Texas 75207
214 522 1100

AUSTIN

1023 Springdale Road, Bldg 11A
Austin, Texas 78721
512 861 9600