



Interior Architecture

Kirksey
ARCHITECTURE

Offices in **Houston + Austin + Dallas**

ARCHITECTURE

INTERIOR DESIGN

MASTER PLANNING

SUSTAINABILITY

BUILDING PHYSICS

BRANDING

Commercial

Community

Collegiate

pK-12

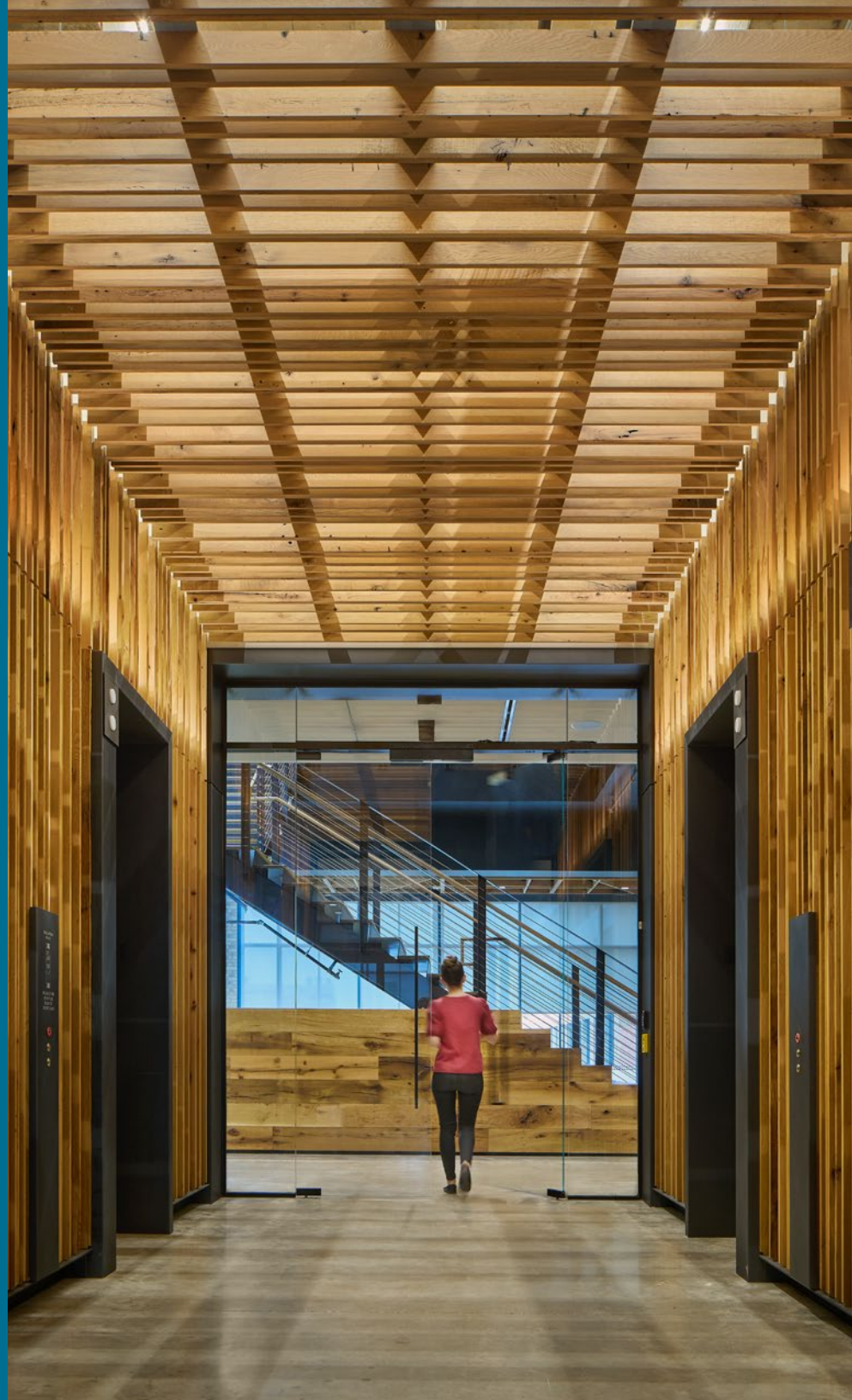
Government

Healthcare

Hospitality

Multifamily Residential

Science & Technology

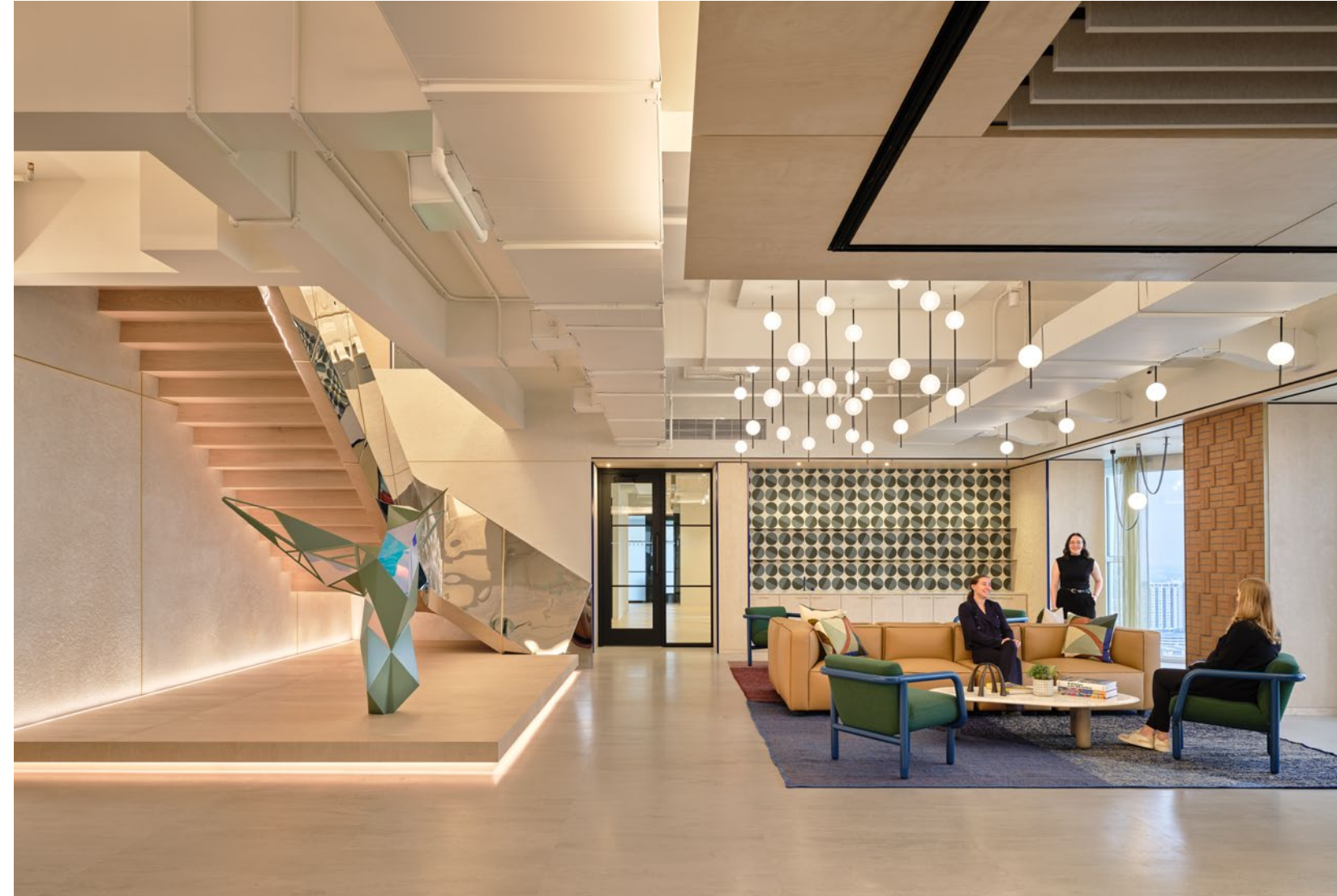


Modern work environments require design solutions that elegantly blend culture, function, productivity, and inspiration.

Kirksey
ARCHITECTURE

A reinterpretation of Camden's foundational material palette of wood, brick, and plaster in a workplace designed for creative connections.

Camden
107,000 sf
4.5 floors





A progressive, different kind of law firm.



Hicks Johnson

20,800 sf

1 floor

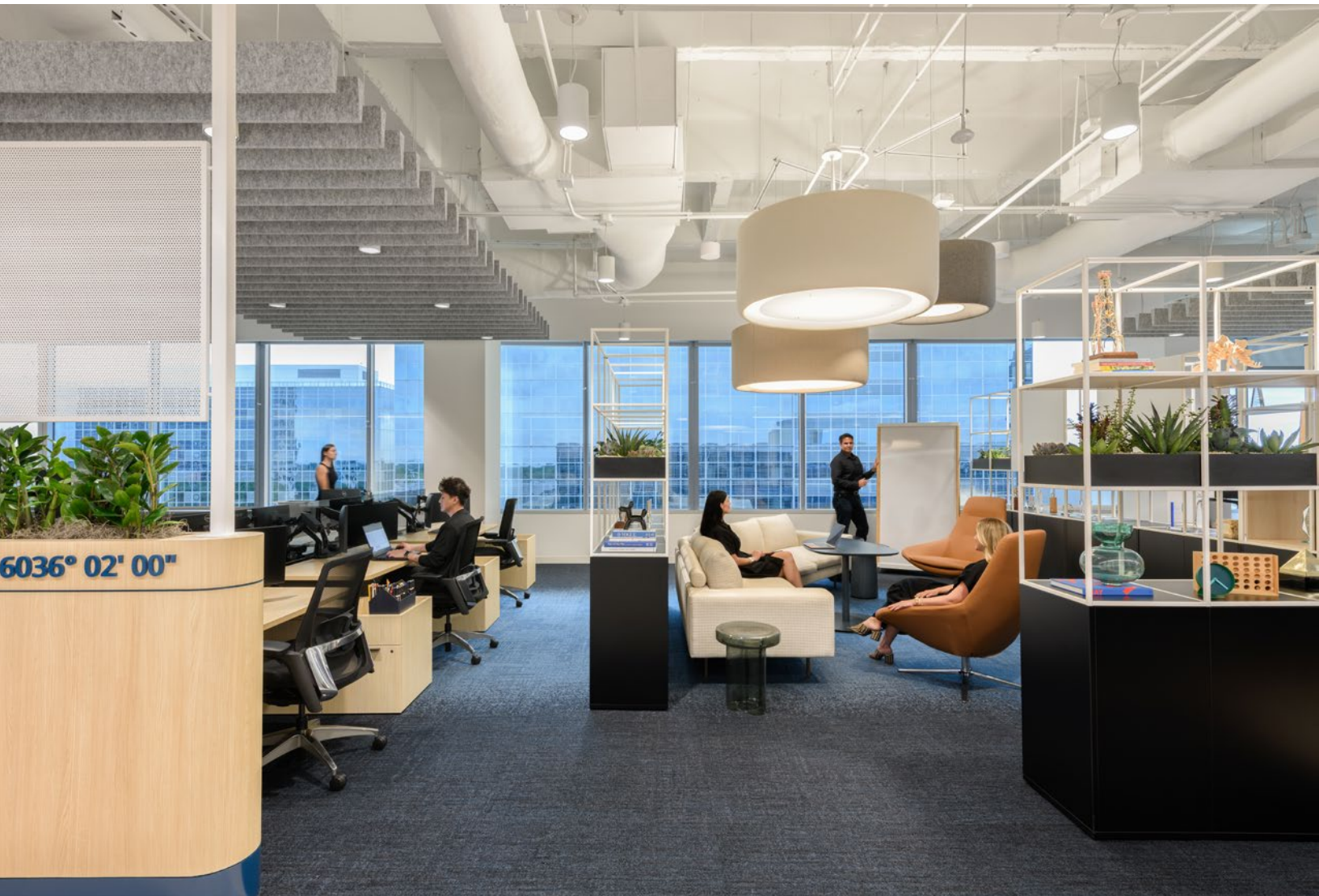


A workplace reflecting Noble's commitment to innovation through a design informed by offshore environments and advanced technology.

Noble

120,000 sf
2 floors





A design that reflects professional excellence and elevates the corporate identity of two companies under a new brand.



Coterra Energy

124,000 sf
6 floors



Brand and cultural identity drive this people-centric, restorative and highly sustainable space.

Credit Human

186,000 sf

7 floors

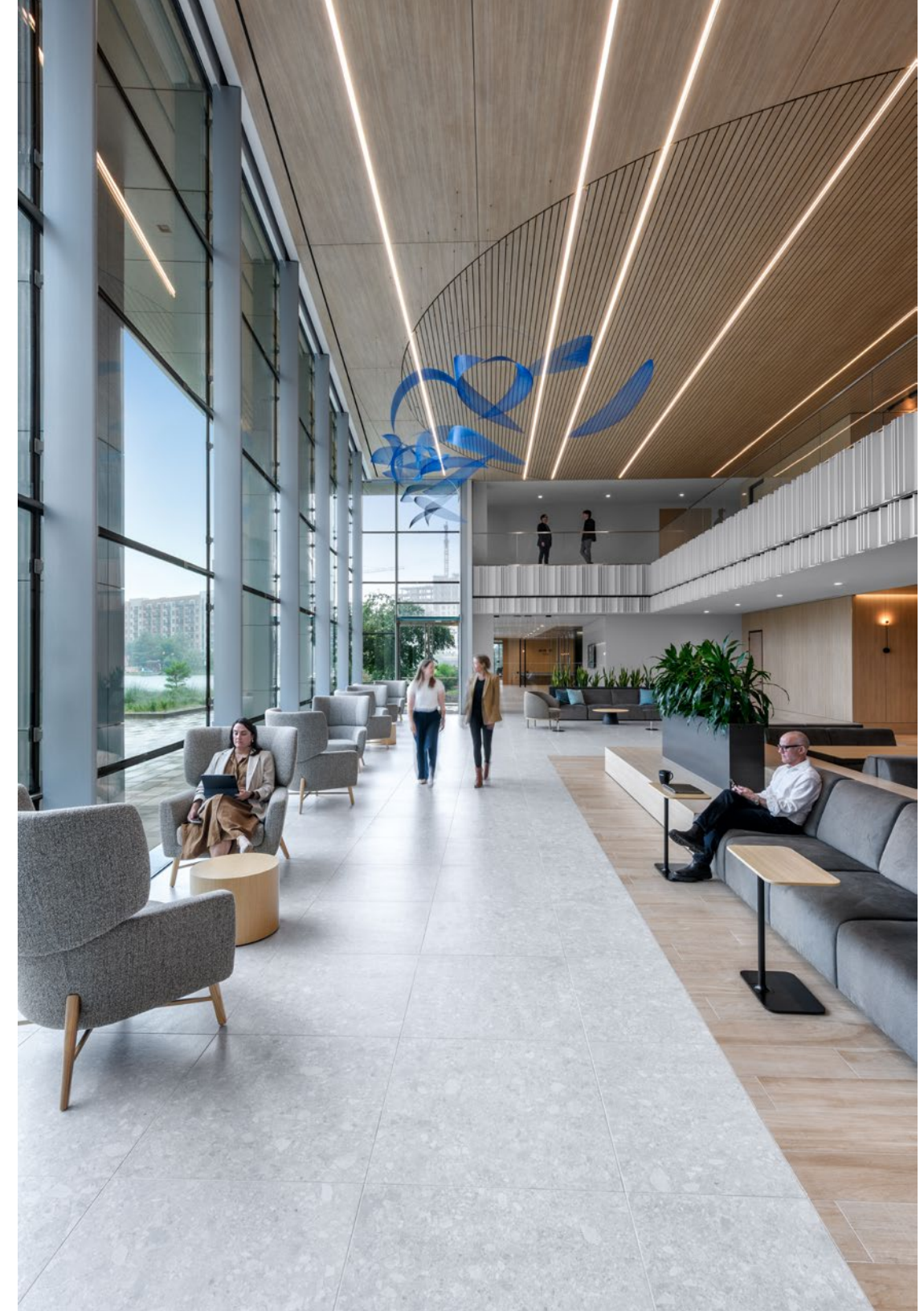




An amenity-rich corporate campus that focuses on creating social and professional connections.



Chevron Phillips
324,000 sf
6 double floorplates





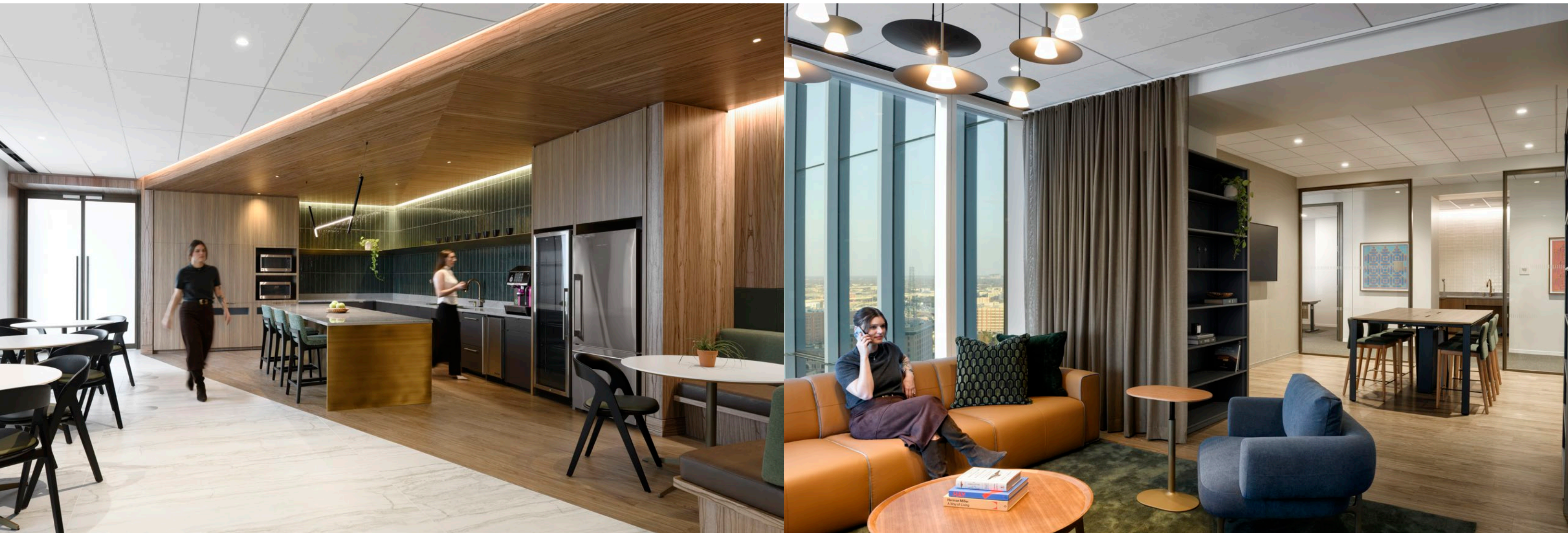
A refined and sophisticated workplace with ample areas to collaborate and focus.



Skadden, Arps, Slate, Meagher & Flom

41,000 sf

2 floors



Soft geometries and a lux but refined palette reflect Austin's vibrant hospitality scene.



Haynes Boone, Austin

21,000 sf

1 floor



A work lounge floor that offers a wide variety of work environments, collaborative areas, and heads-down spaces.

Sabic
25,000 sf
1 floor





Timeless and formal, this design is light-filled and open to encourage interaction.



Reed Smith

55,000 sf

2 floors



A vertical campus that offers a variety of amenities and visual environments for collaboration or focus, connected by a 13-floor stair.



LyondellBasell

318,000 sf

15 floors



An agile work environment with an ecosystem of spaces supporting a diverse range of work modes and social environments.



Insperty Dallas

40,000 sf

1 floor



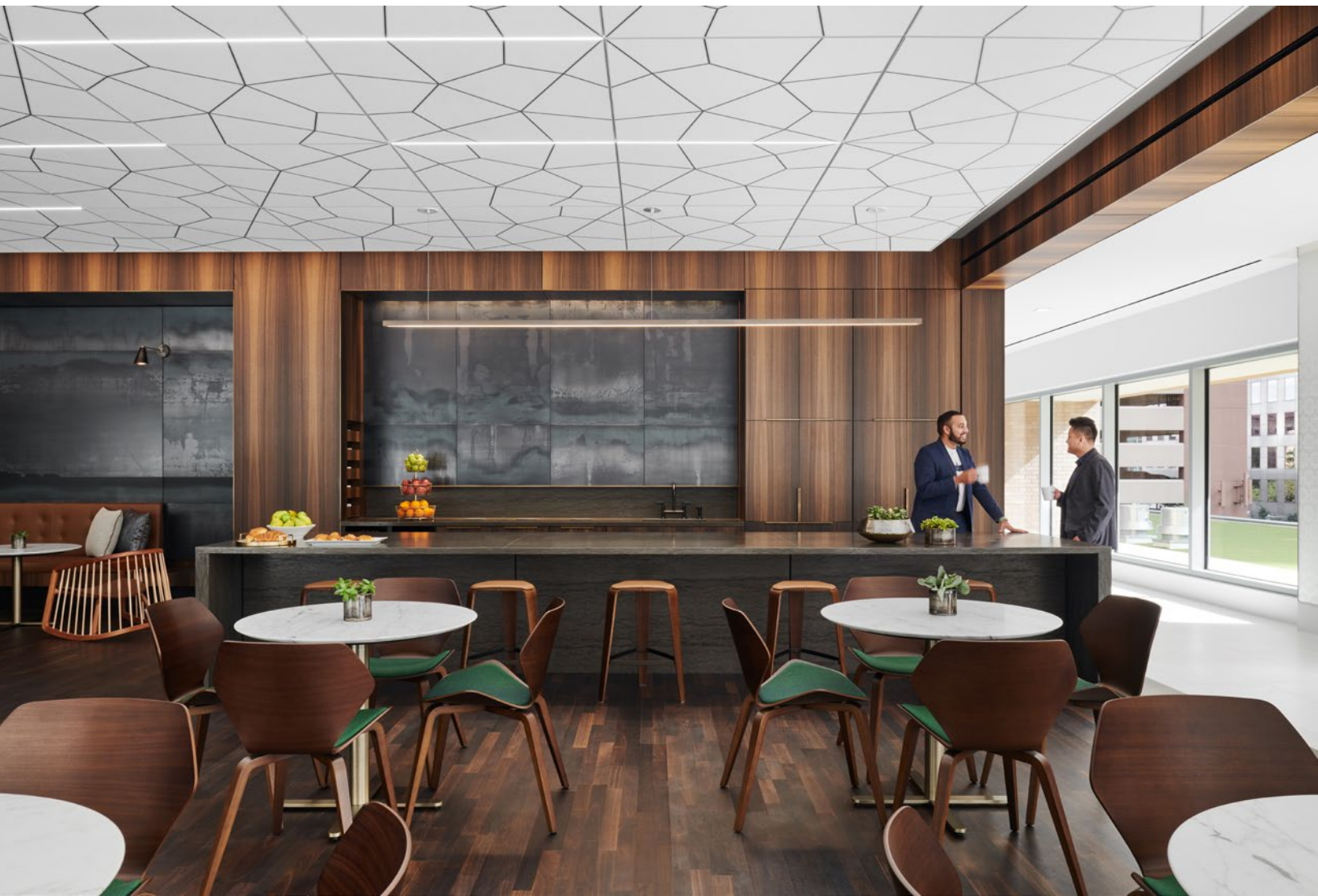
A wow-factor with subtle branding and nods to Motiva's identity as a Saudi Aramco company.



Motiva

247,000 sf

9.5 floors

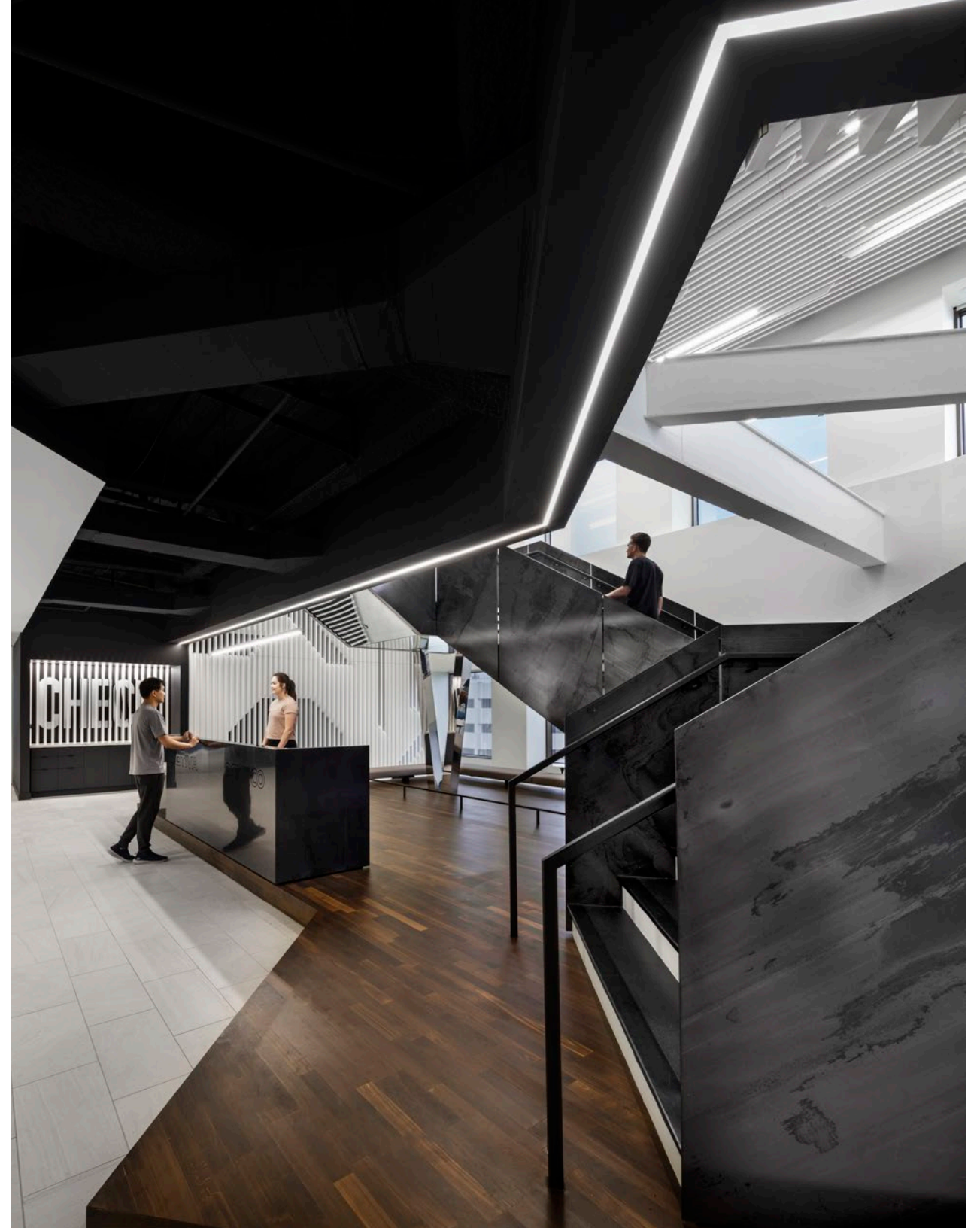


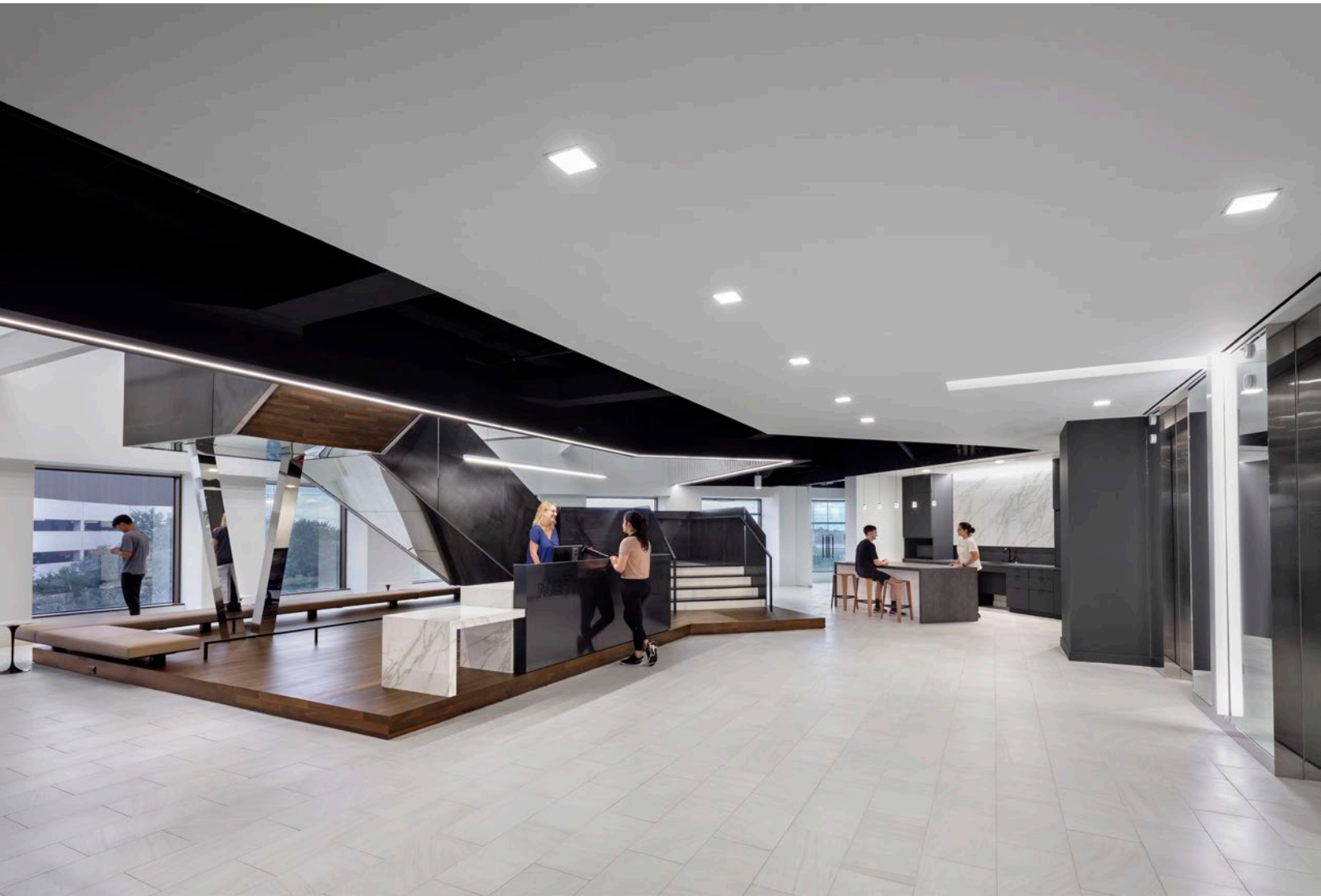
A top-of-the-line corporate fitness center that reflects movement and dynamism.

Motiva Fitness Center

47,000 sf

2 floors



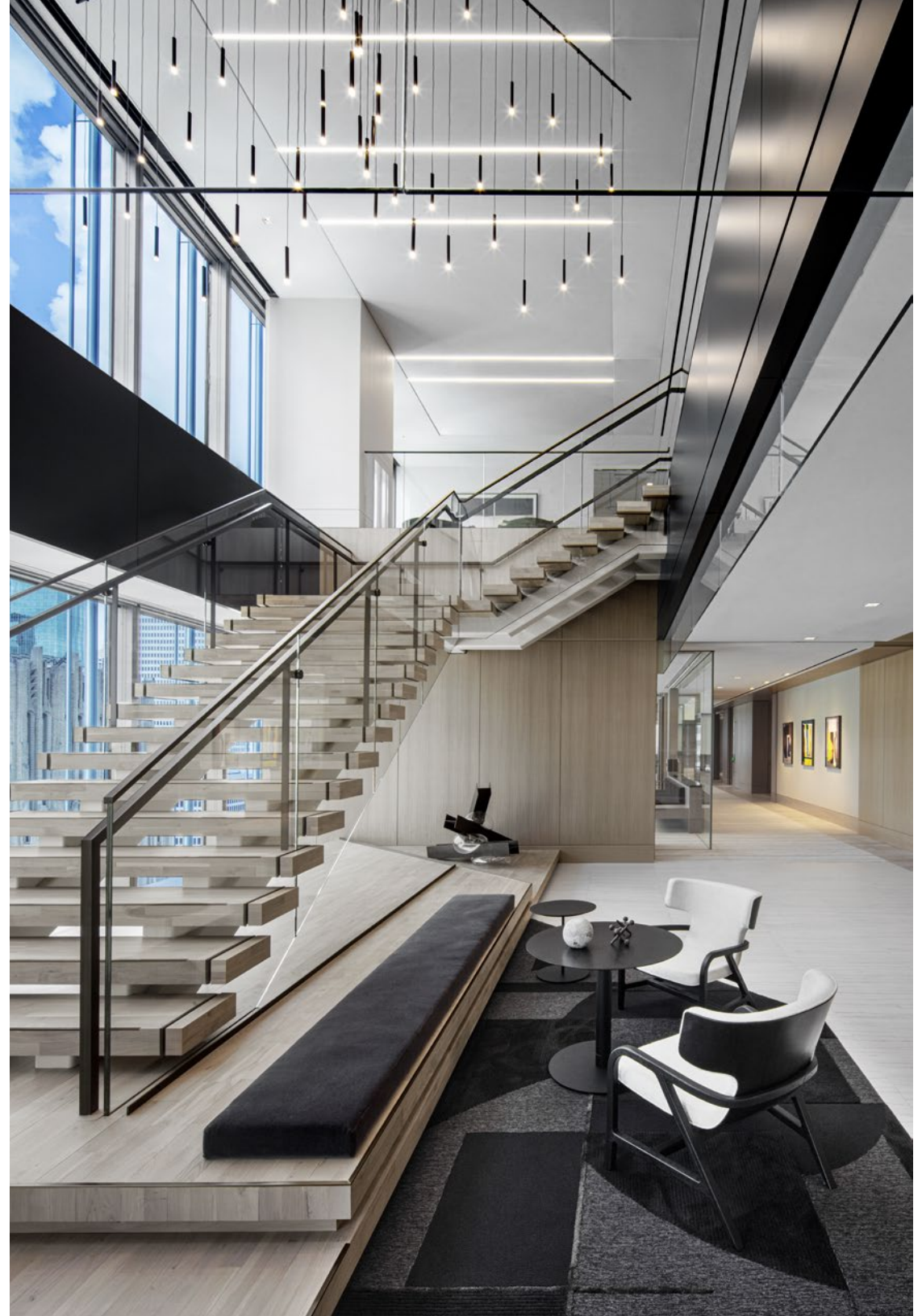


Composition, contrast, and art blended with a state-of-the-art conference facility and practice offices.



White & Case, LLP
57,000 sf
2 floors





A brand-forward, comfortable workplace with residential overtones that earns everyone's commute.

Aon
25,000 sf
1 floor





A hospitality-driven design that caters to both visitors and employees with a strong connection between multiple floors.



Haynes Boone, Houston

72,000 sf
3 floors



A tech hub designed to inspire creativity, socialization, and innovation.

Confidential Technology Client

60,000 sf

2 floors





A high-end fitness center with a spa-like environment.



1100 Louisiana, Fitness Center

5,000 sf

1 floor



A dynamic space that supports a highly remote workforce, flexibility, and a culture of knowledge sharing.



McKinsey & Company

37,000 sf

1.5 floors



Kirksey.com

TX REGISTERED ARCHITECT #5236 / © KIRKSEY



Kirksey
ARCHITECTURE

Houston + Austin + Dallas

HOUSTON

6909 Portwest Drive
Houston, Texas 77024
713 850 9600

DALLAS

143 Manufacturing Street
Dallas, Texas 75207
214 522 1100

AUSTIN

1023 Springdale Road, Bldg 11A
Austin, Texas 78721
512 861 9600